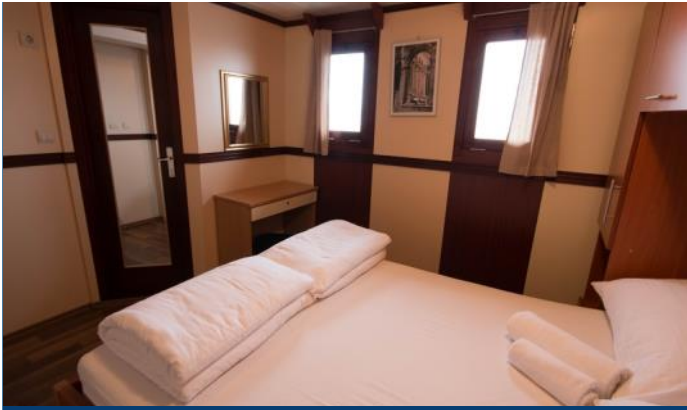


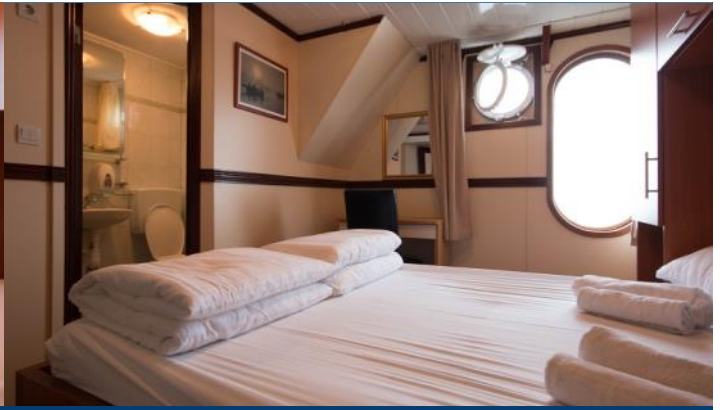


YACHT STYLE COASTAL CRUISE VESSEL

FOR CHARTER



Double Cabin with window on Upper Deck



Double Cabin with panorama port hole on Main Deck



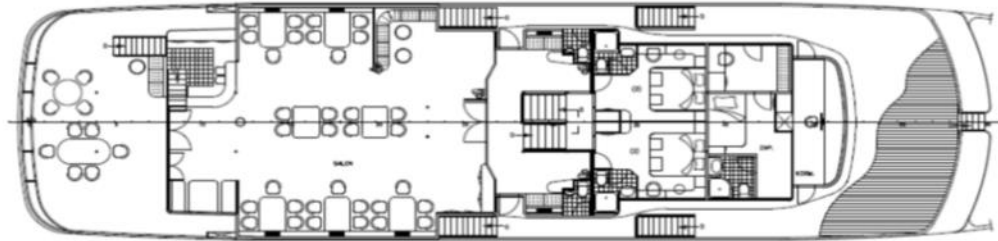
Restaurant on Upper Deck



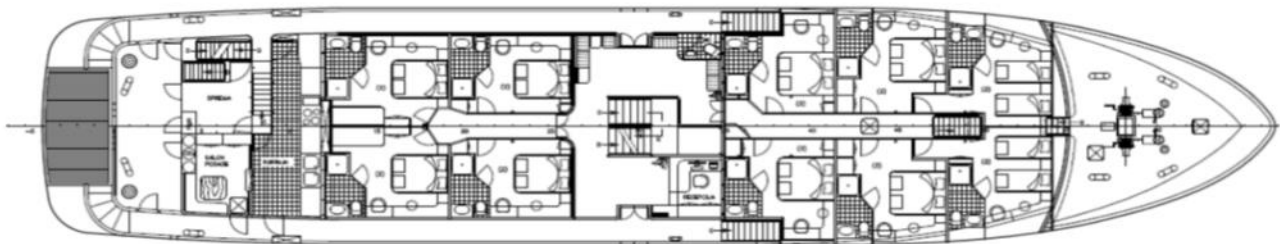
Bar on Upper Deck



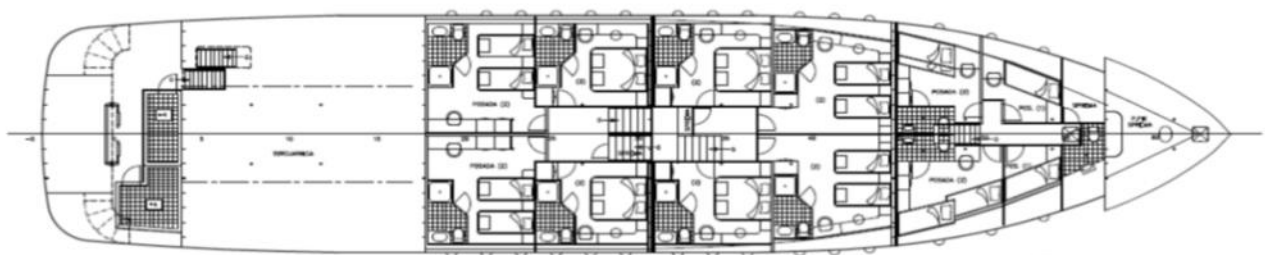
Lido Area on Upper Deck



GORNJA PALUBA



GLAVNA PALUBA – KAŠTEL



TRUP



| | | | |
|------------|---------------------|----------------|--------------------|
| Built | 2011 | GRT | 499 |
| Shipyard | Brodosplit, Croatia | Water tank | 100.000 l |
| Length | 42,5 m | Fuel tank | 25.000 l |
| Width | 8,90 m | Engines | 2 x 700 HP |
| Draft | 3 m | | |
| Cabins | 18 | | |
| Passengers | 36 (up to 38) | | |
| Crew | 11 | | |
| Flag | Croatian | Cruising speed | 10 kn (max. 15 kn) |

Restaurant
Salon / Bar with Lido Deck

Lobby
Reception

Sundeck with Jacuzzi & Sun Protection
Swimming and Watersports Platform

Passenger Cabin Assignment

Upper deck

2 double bed cabins with windows, 13 m² / 140 ft²

Main Deck

4 double bed cabins with panorama window, 14,50 m² / 156 ft²

4 double bed cabins with window, 15 m² / 161 ft²

2 twin bed cabins with panorama window, 14 m² / 150 ft²

Lower Deck

2 twin bed cabins (with additional bed for child) with porthole, 15 m² / 161 ft²

4 double bed cabins with porthole, 14,50 m² / 156 ft²

Crew Cabins

4 double cabins

3 single cabins (depending on crew capacity two single cabins could be used for pax or staff)

Errors and omissions excepted
October 2017